



**ilanga**  
**CHEM GROUP**

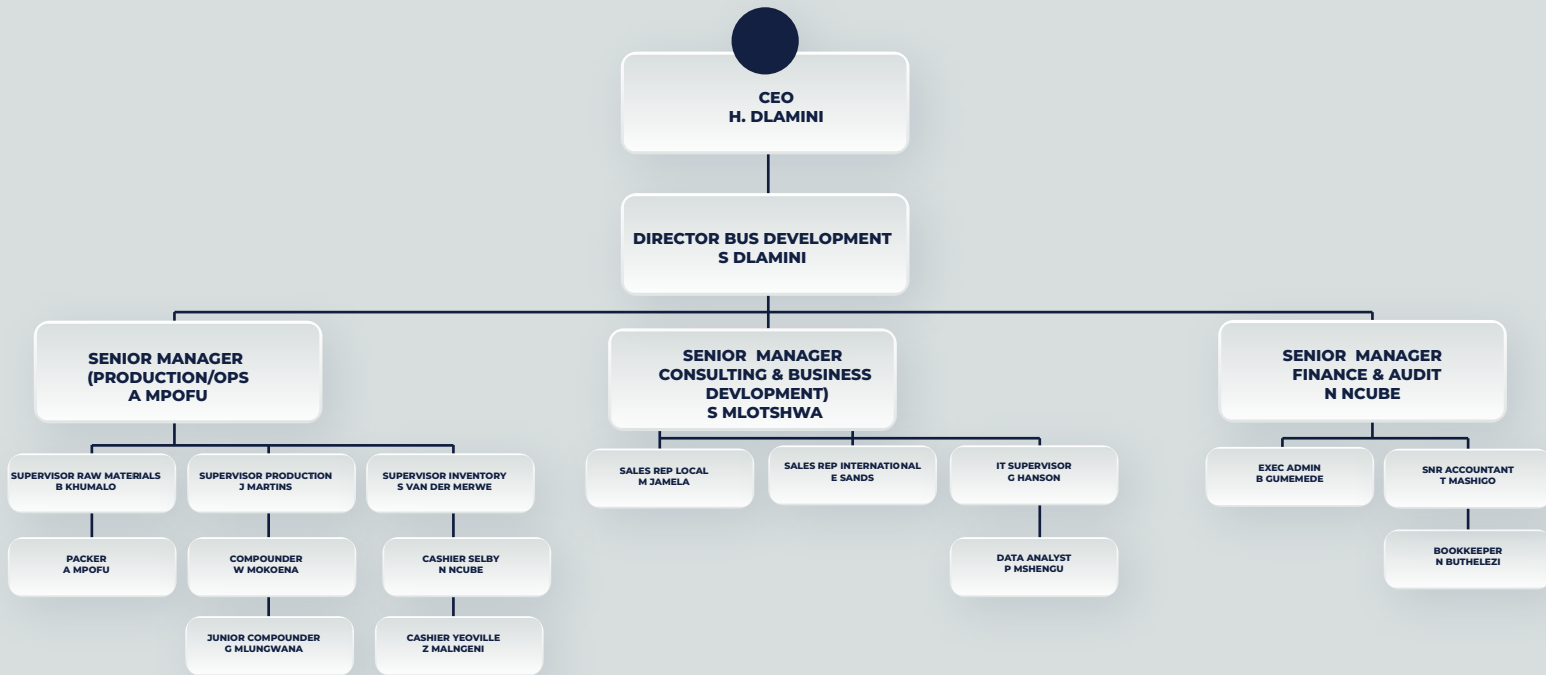
# GROUP PROFILE



# GROUP STRUCTURE



Ilanga Chem Group has 2 main divisions namely Project Management /Consulting and Chemical Manufacturing and distribution



Ilanga Chem Group has 2 main divisions namely Project Management /Consulting and Chemical Manufacturing and distribution



PROJECT MANAGEMENT AND CONSULTING  
SPECIALISTS “FOR A SUSTAINABLE TOMORROW”

# INTRODUCTION

K2S Ltd a wholly owned subsidiary of Ilanga Chem Group helps businesses compete in the digital economy, where the customer journey begins, progresses and ends in an entirely digital environment.

In finance, this means transforming paper-based, manual processes to end-to-end automated processes that work the way you do—on premise, in the cloud and via mobile.

In recruitment this means tailor making recruitment solutions for companies big or small

In Project Management this means an end to end solution which is user friendly fast and efficient.

Training

Real time reporting

Timeous identification of problems

Effective and efficient resolution of problems

An inclusive Project Management Strategy

# OUR SERVICES



Project Management  
IT Financial Solutions  
Accounting | Audited Financial Statements  
CIPC  
SARS  
CSD Compliance  
Recruitment and Consulting  
Small Business start ups  
Training

# PROJECT CYCLE



## K2S e-Solutions Project Management and Business Solutions

### K2S E – Recruitment

Believe in your own power  
Small changes can have big impacts. With the right attitude and approach you can create a ripple effect that transforms the work



# K2S E – Recruitment Solutions

K2S prides its self in having helped many organisations develop and manage their recruitment and people management process.

The recruitment process is an important part of human resource management (HRM). It isn't done without proper strategic planning.

Recruitment is defined as a process that provides the organization with a pool of qualified job candidates from which to choose. Before companies recruit, they must implement proper staffing plans and forecasting to determine how many people they will need.

1. Discuss the need for forecasting human resource needs and techniques for forecasting.
2. Be able to explain the steps to an effective recruitment strategy.
3. Be able to develop a job analysis and job description.

# K2S

## E – Recruitment



The basis of the forecast will be the annual budget of the organization and the short- to long-term plans of the organization—for example, the possibility of expansion. In addition to this, the organizational life cycle will be a factor.

Forecasting is based on both internal and external factors. Internal factors include the following:

1. Budget constraints
2. Expected or trend of employee separations
3. Production levels
4. Sales increases or decreases
5. Global expansion plans
6. Global pandemics

Analysing external factors which might include the following:

1. Changes in technology
2. Changes in laws
3. Unemployment rates
4. Shifts in population
5. Shifts in urban, suburban, and rural areas
6. Competition

Once the forecasting data are gathered and analyzed, the K2S consulting professional can see where gaps exist and then begin to advise their customers on how to recruit individuals with the right skills, education, and backgrounds.

## K2S e-Logistics

An intelligent mobile App

Mobile bar Scanning capability for easy identification of delegates and service providers

Management and real time reporting of customers and service providers

CSI reporting

E-Training Attendance Register

Live Dashboard of programme Milestones

Accessible granular reporting



# K2s

## E-solutions Finance & Consulting Solutions

### Intelligent Accounts Payable Invoice Automation Software

"By 2025, demand for financial management application deployments delivered as cloud services will equate to more than 65% of total market spend."  
- GARTNER, "FINANCE MOVING TO THE CLOUD"

## K2S e-Invoicing

Invoice data capture and approval and exceptions workflow  
IOFM research shows that over half of organizations are spending between R16 and R75 on average to process a single invoice, while the other 50% are spending up to R250, or even more. How does your organization measure up?  
K2S e- Invoicing introduces a paperless effective and efficient solution

Supplier Invoices will be processed through the supplier portal  
Will immediately interface with K2S FI  
Suppliers can track invoice status on line  
Billing functionality enables K2S to reconcile invoice automatically

# Components Included in the e-Invoice



## 1. EXTRACT

Automatically captures data on incoming invoices

Handles all invoices—paper, email, fax, web, EDI, and electronic invoice; mobile capture included

Extracts invoice data, applying recognition rules and confirming match with master data

Handles recognition exceptions with on-the-fly self-learning technology



## 2. CONTROL

Single point of visibility to entire invoice process

Automatically checks and validates invoice data in SAP, and completes missing business data

Automatically posts invoices with no outstanding business issues

Distribute and prioritize workload to AP staff

Reverses invoices

Uses standard SAP transactions when desired

Provides onboard analytics to improve the process flow



## 3. RESOLVE

Automatically start exception handling workflows

Performs coding and approval

Applies segregation of duties rules

Uses existing chart of authority structures



## 4. SUPPLIER PORTAL

Supplier communication portal

Invoice status lookup

PO info

Invoice submission

Discount offers

Dispute resolution

Vendor master change process



## 5. CLOUD ARCHIVE

Secure cloud archive stores invoice images and process information such as workflow logs

Store and retrieve data and images

Reporting and analytics

Fulfills audit and compliance requirements

# Driving value through Sustainability K2S – E -Solutions

Through YOU!!! By getting the mind-set.....

This means taking your values to work and automatically  
incorporating sustainability concerns into your everyday thinking.  
People can be the solution and one person can make a difference.

# COMPANY PROFILE



**ilanga**  
CHEM

CSD VENDOR NO : MAA0140399  
GPG VENDOR NO : 1100132599

Tel : +27 11 334 0234 / 011 334 0112  
51 - 61 Rosettenville Road, Unit A3  
Village Main Industrial Park  
Johannesburg 2001  
[www.ilangachem.co.za](http://www.ilangachem.co.za) | [info@ilangachem.co.za](mailto:info@ilangachem.co.za)



# WHO WE ARE

Ilanga Chem is a dynamic, vibrant, broad-appeal company founded in 2008. We specialise in the manufacturing and distribution of personal care, hair care, home care, industrial care, car care and hospital care products to retailers and customers.

# 01

## AN UNWAVERING PASSION

We love what we do and we take pride in our work and products. In our books failure is not an option.

# 02

## OPEN-MINDEDNESS

We never forget how much we can learn from others. We ask for advice. We seize opportunities and we persevere and above all, we are flexible. We soak up the best practices around us like a sponge. Fear of failure makes it easy to grip onto our vision with an iron fist.

# 03

## THE DESIRE TO BE AN EXPERT

We love challenges. But as exciting as it is to consider a new field, high-achieving entrepreneurs know the benefits of staying in the same industry for a while are immense. When you spend years in the same industry, you learn its history. Knowing what's been done before can help you identify how it can and should move forward. In the meantime, you'll build a network of relationships to support you in future endeavours, especially when times are lean. Those relationships are invaluable.

# 06

## DESTINED FOR SUCCESS

# 05

## A CONSTANT FLOW OF IDEAS

Having one project that's doing well is great. But the successful entrepreneurs I know don't rest on their laurels. Instead, they're constantly asking themselves, "What's next?" They understand that being a successful entrepreneur is a lifestyle choice, not a destination.

# 04

## A FORWARD-LOOKING APPROACH

We think ahead, we think on our feet. We may stray from our roadmap, and that's okay, but we have only success in mind. Having a clearly established set of goals will keep us from getting stuck. Our goals may be constantly evolving, and we are going one way and that's to the top.





# VISION AND MISSION STATEMENT

## VISION

To be the leading quality and value manufacturer of Personal, Home, Industrial, Car and Hospital Care products through the creation of highly valued brands.

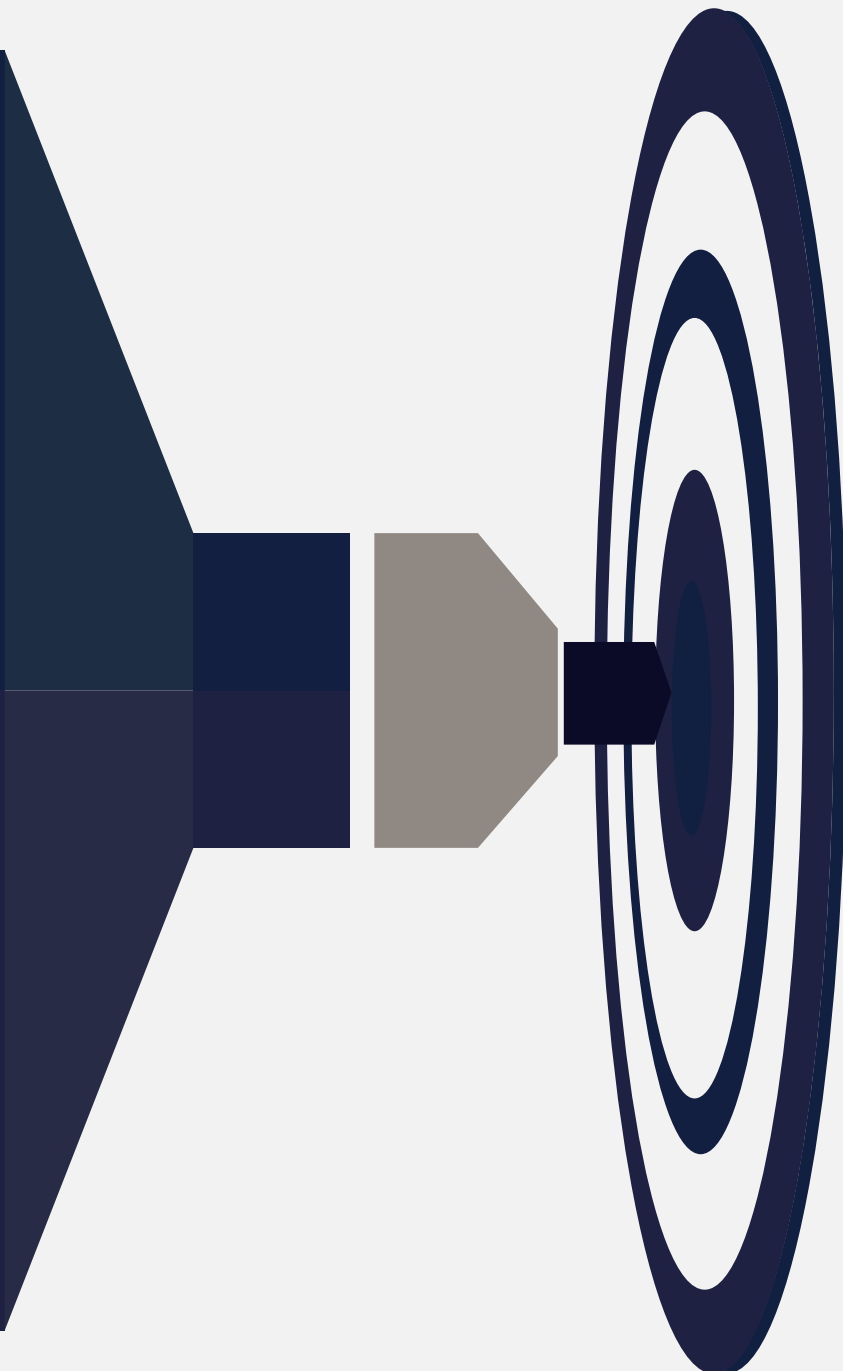
## MISSION

To provide quality and yet affordable cleaning and personal care products. Our strength lies in the price positioning of our product selection and competing strategy.

We want to be highly valued by the customers we serve, the communities in which we operate, our loyal and committed staff and shareholders; to be a company that is driven by growth and innovation.

We believe in strong, fair, mutually-beneficial and long-term partnerships with suppliers. The result is a sustainable and efficient supply chain. This means guaranteed supply for our customers every day.

Reliable suppliers build our confidence to invest in new products. To be a creator of highly valued brands.





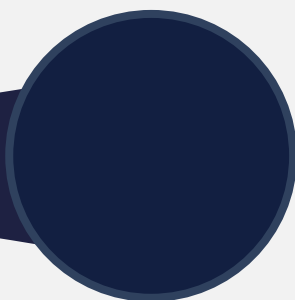


## MEET THE TEAM



**BONGJI DLAMINI : DIRECTOR FINANCE AND CORPORATE GOVERNANCE : QUALIFIED ACCOUNTANT**

Bongji has extensive experience at Senior levels in the Financial domain both locally and internationally. She possesses solid Financial Acumen and has travelled extensively to Europe as the Head of Financial Project Implementation for the English Speaking Countries. She has held various senior position within the logistics industry. This stands her in good stead to be able to look at the business from both the Financial and operational side through her knowledge of Supply Chain management.



**ARKTON MPOFU : HEAD OF FORMULATIONS AND PRODUCT DESIGN: CHEMIST**

His knowledge of Chemical Formulations is insurmountable. He is extremely passionate about chemistry and formulations. He possesses extensive experience in the home and personal care, industrial & institutional cleaning. He prides himself in his ability to design and develop complex chemical solutions for our clients. His expertise will ensure development of world class formulations for Ilanga Chem.



**HAROLD DLAMINI : DIRECTOR : QUALITY AND OPERATIONS : QUALIFIED POLYMER SCIENTIST**

Harold is a perfectionist in Quality and Standard Operating Procedures. He prides himself in a series of successful ISO implementations. With over 20 years in Production and plant management, he possesses invaluable experience in running an efficient plant. He has a solid Operations and Sales background at Senior levels having worked in companies such as Dunlop and Bandag , servicing both local and international clients. Harold recently left his job to focus on growing the 'Chemical Giant' Ilanga Chem.



# OUR GROWTH STORY







# PRODUCT RANGES





# LAUNDRY CARE

PRODUCT NAME	APPLICATION / DESCRIPTION	1L	2L	5L	25L	200L	ALKALINE	NEUTRAL	ACIDIC	DISINFECTANT
SunBrite Dual	Economical Washing powder for use in hand / Machine Wash	●	●	●	●	●		●		
SunBrite Hand	Washing powder to use as a hand wash (Kg)	●	●	●	●	●		●		
Oxybrite	Washing powder to use in Automatic Machines (Kg)	●	●	●	●	●	●			
Bleach	Concentrated chlorine bleach 3-5% available chlorine.	●	●	●	●	●	●			
Fabric Softener	Quality Fabric Softner. Fresh / Baby / Lavender / Waterlilly	●	●	●	●	●		●		
Laundry Liquid	Premium fragranced Liquid Laundry Detergent	●	●	●	●	●	●			
Alkaline Booster	Alkaline booster for stained laundry	●	●	●	●	●	●			
Spotkleen		●	●	●	●	●	●			

# HOUSEKEEPING PRODUCTS

PRODUCT NAME	APPLICATION / DESCRIPTION	1L	2L	5L	25L	200L	ALKALINE	NEUTRAL	ACIDIC	DISINFECTANT
Drain Cleaner Powder	Alkaline powder drain cleaner. Large deposits of fat and grime causing blockages are melted and rinsed away.	●	●	●	●	●	●			
Drain Cleaner Acid	Acidic liquid drain cleaner. Concentrated to ensure quick and efficient cleaning.	●	●	●	●	●			●	
Metal Cleaners	Stainless Steel/Brass/Copper cleaner	●	●	●	●	●		●		
Super Urinal	Rapid acting acidic detergent developed to dissolve uric, scale and mineral deposits in urinals and toilets. The subtle blend of fragrances complement optimum cleaning results.	●	●	●	●	●			●	
Sented Super Urinal	Detergent, deodorizer with an outstanding blend of fragrances that ensures long lasting freshness. A citric acid based product used as maintenance cleaner and removes light scale deposits from urinals.	●	●	●	●	●			●	
Descaler	A delicate blend of fragrances formulated with a strong acid to optimize cleaning and scale removal during deep cleaning applications. Formulated for use as an alternative to HydroChloric acid based products	●	●	●	●	●			●	
Urabite	Remarkable combination of acids to remove deposits from urinals, toilets and other ceramic surfaces and brighten the stainless steel surface.	●	●	●	●	●			●	
Lime Remover	Mildly acidic liquid. Rapidly dissolves scale deposits on kettle, urn and other elements without damaging the metal substrate.	●	●	●	●	●			●	
Toilet Bowl Cleaner	Acid based stainless steel and urinal cleaner	●	●	●	●	●			●	

# HOUSEKEEPING PRODUCTS

PRODUCT NAME	APPLICATION / DESCRIPTION	1L	2L	5L	25L	200L	ALKALINE	NEUTRAL	ACIDIC	DISINFECTANT
Black Dip	Power Cleaner containing organic solvents alkali and grease cutting	●	●	●	●		●			
Carpet Shampoo HF	High foam carpet cleaning detergent. Used in both machine and handwash applications for heavily soiled areas.	●	●	●	●	●		●		
Carpet Shampoo LF	Low to medium foam liquid carpet detergent with powerful cleaning, deodorizing, reconditioning and protective properties. Effective in machine and hand wash applications.	●	●	●	●	●		●		
Hand Soap Somed	Versatile detergent, deodorizer and disinfectant. Good cleaning properties combined with residual, broad spectrum, sanitizing. With a fresh pine fragrance.	●	●	●	●	●		●		●
Handsoap (Sobac Blue scented)	Unique combination of cleaning and anti-microbial properties. Ideally suited for food preparation and other antiseptic applications. Lavender fragrance.	●	●	●	●	●		●		●
Handsoap (Sobac Blue unscented)	Unique combination of cleaning and anti-microbial properties. Ideally suited for food preparation and other antiseptic applications. No fragrance.	●	●	●	●	●		●		
Handsoap So Pearl	Gentle hand soap with Pearlier	●	●	●	●	●		●		
Handsoap So Hand	Gentle hand soap / Strawberry / Lavender / Seabreeze)	●	●	●	●	●		●		
Bath Foam	High foaming bubble bath. Lavender/ Strawberry / Seabreeze)	●	●	●	●	●		●		



# HOUSEKEEPING PRODUCTS

PRODUCT NAME	APPLICATION / DESCRIPTION	1L	2L	5L	25L	200L	ALKALINE	NEUTRAL	ACIDIC	DISINFECTANT
Black Dip	Power Cleaner containing organic solvents alkali and grease cutting	●	●	●	●		●			
Carpet Shampoo HF	High foam carpet cleaning detergent. Used in both machine and handwash applications for heavily soiled areas.	●	●	●	●	●		●		
Carpet Shampoo LF	Low to medium foam liquid carpet detergent with powerful cleaning, deodorizing, reconditioning and protective properties. Effective in machine and hand wash applications.	●	●	●	●	●		●		
Hand Soap Somed	Versatile detergent, deodorizer and disinfectant. Good cleaning properties combined with residual, broad spectrum, sanitizing. With a fresh pine fragrance.	●	●	●	●	●		●		●
Handsoap (Sobac Blue scented)	Unique combination of cleaning and anti-microbial properties. Ideally suited for food preparation and other antiseptic applications. Lavender fragrance.	●	●	●	●	●		●		●
Handsoap (Sobac Blue unscented)	Unique combination of cleaning and anti-microbial properties. Ideally suited for food preparation and other antiseptic applications. No fragrance.	●	●	●	●	●		●		
Handsoap So Pearl	Gentle hand soap with Pearlier	●	●	●	●	●		●		
Handsoap So Hand	Gentle hand soap / Strawberry / Lavender / Seabreeze)	●	●	●	●	●		●		
Bath Foam	High foaming bubble bath. Lavender/ Strawberry / Seabreeze)	●	●	●	●	●		●		

# FLOOR CARE PRODUCTS

PRODUCT NAME	APPLICATION / DESCRIPTION	1L	2L	5L	25L	200L	ALKALINE	NEUTRAL	ACIDIC	DISINFECTANT
Hi Sealer	This high solids, hard wearing vinyl floor sealer, forms a slip resistant protective film with a high gloss. It is suitable for high and ultra speed polishing. For the best results on vinyl, apply 3 coats of Hi Sealer and 2 coats of Hi Shine.	●	●	●	●	●		●		
Hi Shine	High polymer content polish. Has tremendous depth of gloss and excellent wear properties	●	●	●	●	●		●		
Shine On	Professional Floor Dressing with 15% Polymer	●	●	●	●	●		●		
Hi Buff	Spray-buffing compound. Adds protection, repairs and extends re-coating cycle	●	●	●	●	●		●		
Mop and Shine	Floor cleaner with fragrance to clean all floor areas.	●	●	●	●	●		●		
Floor Stripper	Highly concentrated non-ammonia-based floor stripper for quick and effective removal of old polish build up	●	●	●	●	●	●			
So Scrub	Detergent used in Automatic Floorscrubbing machines low Foam	●	●	●	●	●	●			



## KITCHEN CARE PRODUCTS

PRODUCT NAME	APPLICATION / DESCRIPTION	1L	2L	5L	25L	200L	ALKALINE	NEUTRAL	ACIDIC	DISINFECTANT
Sangel	Quick Drying Alcohol based Hand Sanitiser.	●	●	●	●			●		●
Sanspray	Alcohol based hand and surface sanitizer.	●	●	●	●	●		●		●
Multipurpose Cleaner	Multipurpose Cream Cleaner / Lemon / Lavender	●	●	●	●	●	●			
Gel Cleaners (Pine/Citrus Lavender)	Multipurpose Cleaner for cleaning / deodorizing and Disinfecting	●	●	●	●	●		●		●
All Purpose Cleaner	A blend of detergent, solvents, alkali and emulsifiers formulated to provide a general purpose cleaner with a wide range of applications	●	●	●	●	●	●			
San Liquid	Concentrated detergent disinfectant and deodorizer available in Pine and Citrus	●	●	●	●	●		●		●
Premium Dishwashing Liquid	Quality neutral dishwashing detergent. Synergistic blend of wetting agents ensure thick stable foam generation and effective cleaning.	●	●	●	●	●		●		
Eco Dishwashing Liquid	Neutral detergent. General maintenance cleaning and dishwashing. Good balance between cost and performance.	●	●	●	●	●		●		
Auto Dishwashing Liquid	High foaming chlorinated liquid detergent for machine wash. Quick penetration and superior rinsing ensure streak-free results.	●	●	●	●	●		●		
Oven Cleaner	Powerful Alkali Cleaner for Ovens and Grills	●	●	●	●	●	●			
Rinse Aid	Drying Agent/Rinse Aid for Automatic Dishwashing	●	●	●	●	●			●	

# FOOD FRIENDLY PRODUCTS

PRODUCT NAME	APPLICATION / DESCRIPTION	1L	2L	5L	25L	200L	ALKALINE	NEUTRAL	ACIDIC	DISINFECTANT
Hand Soap anti bacterial	Antibacterial Handsoap	●	●	●	●	●		●		●
Sani Gel	Quick Drying Alcohol based Hand Sanitiser.	●	●	●	●	●		●		●
Sani Surface	Alcohol based hand and surface sanitizer.	●	●	●	●	●		●		●
Gel Cleaners(Pine/Citrus Lavender)	Versatile detergent, deodorizer and disinfectant. Good cleaning properties combined with residual, broad spectrum, sanitizing. With a fresh pine fragrance.	●	●	●	●	●		●		●
Thick Bleach	Highly Alkaline Chlorinated Thickened Liquid Detergent and Sanitizer	●	●	●	●	●	●			●
Sani Chlor	A chlorinated powder cleaner providing exceptional bleaching and sterilising agent	●	●	●	●	●	●			●
Drain Cleaner Powder	Alkaline powder drain cleaner. Large deposits of fat and grime causing blockages are melted and rinsed away.	●	●	●	●	●	●			
Anti Scale	A premium liquid blend for removing scale and milkstone.	●	●	●	●	●			●	
Sani Foam	An alkali/chlorine based foaming cleaner sanitiser for food processing areas	●	●	●	●	●	●			
Per Acetic Acid	Per Acetic based sanitizer for agricultural industries	●	●	●	●	●			●	●





## CAR CARE PRODUCTS

PRODUCT NAME	APPLICATION / DESCRIPTION	1L	2L	5L	25L	200L	ALKALINE	NEUTRAL	ACIDIC	DISINFECTANT
Tyre and Dash Shine	High quality, long lasting, silicone based tyre and dash shine. Rejuvenates and protects plastic rubber and vnyl	●	●	●	●	●				
Tyre Gel	Tyre and dash gel. Silicone Free	●	●	●	●	●		●		
Tyre Shine	Water based Economical Tyre Shine	●	●	●	●	●		●		
Tyre Gel Black	Hi quality black silicone Tyre Gel	●	●	●	●	●		●		
Tyre Silicone Spray	Hi Gloss Silicone Spray Concentrate	●	●	●	●	●		●		
Auto Car Wash Shampoo	High foaming car wash shampoo for jet wash or automatic machines. PH Balanced gives a brilliant shine	●	●	●	●	●		●		
Wash and Wax Shine	Thick high foaming carwash shampoo. Added waxes to give a brilliant shine	●	●	●	●	●		●		
Car Polish	Auto Glaze car polish, high quality general polish used to renew and protect layer of automotive paint	●	●	●	●	●		●		
Body Wax	Polymers, waxes and silicones which are combined to give a long lasting durable protective layer and shine. Lasts up to 6 months	●	●	●	●	●		●		
Spotkleen	Multipurpose solvent based degreasers/upholstery cleaner	●	●	●	●	●				



# CAR CARE PRODUCTS

PRODUCT NAME	APPLICATION / DESCRIPTION	1L	2L	5L	25L	200L	ALKALINE	NEUTRAL	ACIDIC	DISINFECTANT
Body Polish	A medium level abrasive used to remove slight scratches, excellent all round polish product.	●	●	●	●	●		●		
Burnishing Compound	Ultra high abrasive for deep scratch removal and better oxidation	●	●	●	●	●		●		
Hand Grit	Industrial Hand Cleaner with Grit	●	●	●	●	●		●		
Rinse Aid	Economical Beading/Rinse Aid agent for automatic carwash machinery	●	●	●	●	●			●	
Waterless Wash	Spray onto vehicle, wipe dirt off with one micro fibre cloth and buff with another clean micro fibre cloth.	●	●	●	●	●		●		
Truck Wash	Highly Alkaline product used on Trucks/ buses/equipment. Used effectively as a forecourt concrete cleaner, engine, factory floor cleaner	●	●	●	●	●	●			
Mag Shine	Used to clean vehicles mag wheels, removes brake dust. Also Used to remove lime scale build up on wash bay tiles	●	●	●	●	●			●	
Tar Remover	A rapid working solution for the removal of tar, insects, glue and any marks from cars	●	●	●	●	●	●			
Window Cleaner	Perfumed window, mirror and light duty cleaner	●	●	●	●	●	●			
Airfreshner	Concetrated liquid air freshener	●	●	●	●	●	●			



# INDUSTRIAL PRODUCTS

PRODUCT NAME	APPLICATION / DESCRIPTION	1L	2L	5L	25L	200L	ALKALINE	NEUTRAL	ACIDIC	DISINFECTANT
Hi Sealer	This high solids, hard wearing vinyl floor sealer, forms a slip resistant protective film with a high gloss. It is suitable for high and ultra speed polishing. For the best results on vinyl, apply 3 coats of Hi Sealer and 2 coats of Hi Shine.	●	●	●	●	●		●		
Hi Shine	High polymer content polish. Has tremendous depth of gloss and excellent wear properties	●	●	●	●	●		●		
Shine On	Professional Floor Dressing with 15% Polymer	●	●	●	●	●		●		
Hi Buff	Spray-buffing compound. Adds protection, repairs and extends re-coating cycle	●	●	●	●	●		●		
Mop and Shine	Floor cleaner with fragrance to clean all floor areas.	●	●	●	●	●		●		
Floor Stripper	Highly concentrated non-ammonia-based floor stripper for quick and effective removal of old polish build up	●	●	●	●	●	●			
So Scrub	Detergent used in Automatic Floorscrubbing machines low Foam	●	●	●	●	●	●			



# BIOLOGICAL SOLUTIONS



Enzymatic  
Solutions

Blood Stains Removal  
Solutions

Lipids  
and Fats  
Removal  
Solutions

Starch  
Breakdown  
Solutions

Surgical  
Instrument  
Cleaners and  
Lubricants

Rust and  
Corrosion

Sanitisers

Weed killers



# GREEN SOLUTIONS

## Odour Care Solutions

Grease Traps Solutions

Carpet Care Solutions

Green  
degreasers

All Purpose  
Cleaners

Waste Water  
Treatment

Sewage Treatment





## RAW MATERIALS DIVISION

We have partnered up with **TGS Chemicals South Africa**.  
A large supplier of raw materials both bulk and pre-packs to cater for the small manufacturers who do not have the cashflow to buy in bulk. We are a leading supplier of:

**WATER TREATMENT CHEMICALS**

**MINING**

**DETERGENT AND SOAP MANUFACTURING**

**FOOD INDUSTRY AND AGRICULTURE CHEMICALS.**



# CHEMICALS

## INDUSTRIAL AND WATER TREATMENT CHEMICALS:

Aluminium Sulphate, Caustic soda Flake/Pearls, Hydrogen Peroxide 50% / 35%, Sodium Hydrogen, Sulphuric Acid 98%, Ferrous Sulphate, Barox Powder, Cobalt Sulphate, Magnesium Sulphate, Acetic Acid, Sodium Sulphate

## FOOD AND BEVERAGE INDUSTRY:

Sodium Benzoate, Sodium Bicarbonate, Sodium Gluconate, Sodium Ascobate, Acetic Acid, Ascorbic Acid, Potassium Sorbate ( Granular or Powder), Calcium Chloride(FG), Maize Starch, Phosphoric Acid, Soya Lecithin for - Sodium Saccharin, Scorbic Acid - Whey Powder

## DETERGENT - SOAP MANUFACTURING:

Potassium Hydroxide, Soda Ash Light/Dense, Perfumes, Propylene Glycol, Caustic Soda, Dyes, Sodium HexaMetaphosphate, Sulphonic Acid, Sodium Tripolyphosphate (STPP)

## AGRICULTURE INDUSTRY:

Magnesium Sulphate Monohydrate, Ammonium Sulphate, phosphorus Acid, Mono Ammonium Phosphate, manganese Sulphate Monohydrate, Zinc Sulphate Heptahydrate, Ammonium Phosphate, potassium Chloride

# **INTERNATIONAL BUSINESS**





Through our extensive knowledge in recruitment consulting and HR strategy development over the years, Ilanga group has decided to set up an International recruitment company. Covid -19 challenges has brought about an acute shortage of staff in various sectors of the UK market. Ilanga Chem Group through its subsidiary Lifeline Agency will endeavor to bridge that gap.



# COMPANY PROFILE

56 Laburnum Grove Slough SL38QU, United Kingdom  
National : +44 (0) 3301 745025 • Slough : +44 (0) 1753 971 243  
[www.lifelinehcare.com](http://www.lifelinehcare.com) • [info@lifelinehcare.com](mailto:info@lifelinehcare.com)

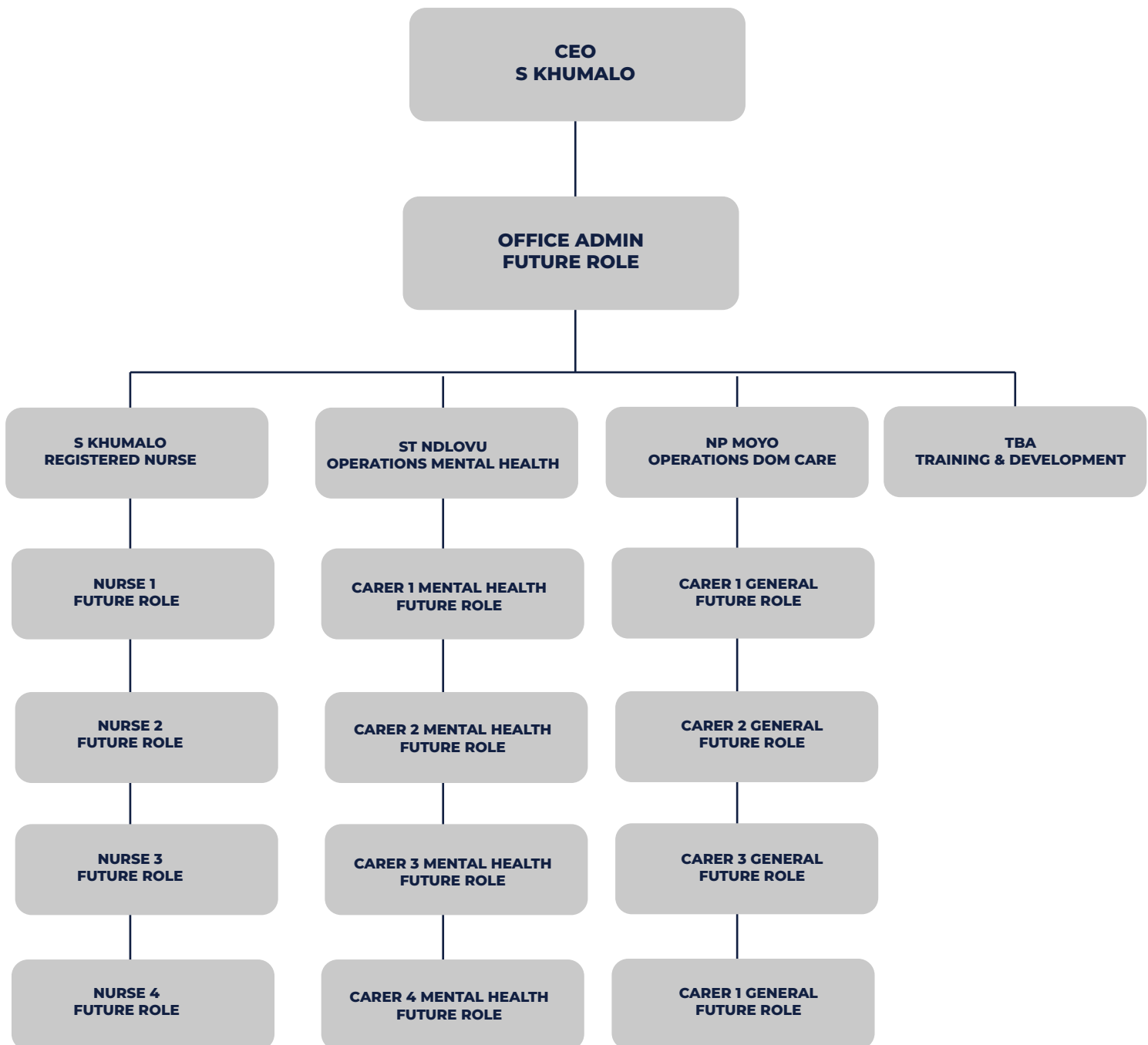


# WELCOME TO **LIFELINE**

Lifeline is an established independent medical recruitment company providing healthcare recruitment expertise to both the public and private sectors. Our clients include but not limited to: Public and Private hospital ,Care Homes,Clinics,Supported Living and private individuals requiring care in the comfort of their home.We aim to cater for all our client's needs and expectations.

We have a proven track record in providing high-quality nurses,health care assistants , temporary and permanent doctors, nurses, allied health professionals and healthcare assistants. We understand that every establishment is different and therefore we ensure our service is tailored to specifically suit our clients' financial and clinical needs and ensuring are staff are compliant , knowledgeable and up to date with training including Covid-19

# TEAM LIFELINE



# TEAM LIFELINE

MEMBER OF STAFF	JOB TITLE	HOME ADDRESS	EMAIL	CONTACT DETAILS
NANCY PAULINE MOYO	DIRECTOR	56 LABURNUM GROVE SL3 8QU SLOUGH	nancy@lifelinecare.com	01753971243
SEMUKELISIWE KHUMALO	REGISTERED NURSE/SISTER	35 FAIRLEA PLACE LONDON W5 1SP	semu@lifelinecare.com	01753971243
SANDILE T NDLOVU	MENTAL HEALTH	8 HANFORD COURT BRISTOL BS14 8BD	tony@lifelinecare.com	01753971243



# TABLE OF CONTENTS

About Us

Why Choose Us

Vision , Mission and Values

Services

Future Positions and more

How To Apply





## ABOUT US

Lifeline has a dedicated team of professionals with vast experience and knowledge in their respective medical, hospitality, accounts and communications fields. The combined skill set that the company possesses makes Lifeline the most ideal service provider of choice for assessment, need identification and provision of ideal personalised services

We are a specialised healthcare staffing service provider, supplying , Temporary, and Block placements staffing solutions to both public and private health care institutions.

We go a step further in offering our staff to home based care facilities to suit individual nursing and carer requirements for adults aged between the ages of 18 to 65+.

Our dedicated and experienced staff meticulously vets and selects medical professionals from Qualified nurses, Health care assistants or care workers.

We will also be recruiting for doctors Pharmacists Allied Healthcare Professionals, Nurses and Carers based on the specific clientele requirements.

# WHY CHOOSE **LIFELINE?**

## SOURCE RIGHT CANDIDATES



- Highly trained staff
- DBS checks
- More choices
- Reliability and adaptability

### HIGHLY TRAINED STAFF

- Our staff are highly trained in the following disciplines:
- Mandatory Training
  - Inhouse Training
  - Covid-19 Training

### MORE CHOICES

- Locally and Internationally qualified and trained staff.
- Larger Geographic Footprint

### ADAPTABLE

- Contingency Agency.
- Short and Long Term Staffing Needs.





## MISSION STATEMENT

At Lifeline we fulfil tailored institutional healthcare needs with experienced and highly motivated healthcare professionals and solutions.

We adapt to our clients changing needs as well as changes in the market to make sure we are a business of growth and innovation, success and happiness. We want to be highly valued by the clients we serve, the communities in which we operate and our loyal and committed staff.

## VISION

To adapt to the dynamic world of recruitment by devoting ourselves to the satisfaction of our clients, candidates and staff.



## VALUES

Passion; Excellence; Commitment; Respect; Integrity. Our staffing compliment is driven with the Passion to perform their duties with Excellence through Commitment to their duty and Respect for their patients and colleagues, building Integrity for themselves and Lifeline Agency.



# SERVICES

We are a specialist healthcare staffing Agency that provides healthcare recruitment to public and independent healthcare institutions, Care Homes ,Nursing Homes and Private Individuals .We are proud to be a key support for all temporary and permanent staffing solutions doctors, nurses ,care givers and support workers.

## Health Care Givers



### Our Care Givers are trained in the following disciplines:

**Live- In Care Givers** providing emotional, financial, nursing, social and personal care.

**Domiciliary Care** givers providing personal care, cooking, light housekeeping and maintaining a safe environment. This ensures that the client continues to live independently in the comfort of their home.

**Support Workers** assisting individuals who are unable to live independently by offering them the practical help they need as well as emotional support. This entails providing help to people with physical disabilities, learning difficulties, challenging behavior and people with dementia.

**Palliative Care Givers** providing care to people with complex illnesses. In order to help them achieve the best possible quality of life, keep them active and comfortable for as long as possible.

**End of Life Care Givers** delivering personalized care in real time. Providing skilled medical and nursing care, including pain and symptom management. They also provide complimentary counselling, emotional support and bereavement support.



## SERVICES (cntd)

### Advance Practice Nursing Designations (APN)



**RGN ( Registered Nurse)** Provide and coordinate patient care, educate and provide advise and emotional care to patients.

**CRNA ( Certified Registered Nurse Anesthetist)** highly trained nurse that specializes in assisting with anesthesia during surgery.

**CCN ( Critical Care Nurse)** Specifically trained for emergency situations.

**CNM ( Certified Nurse Midwife)** Provide care to women including gynecological exams, family planning services and pre and post natal care as well delivering babies.

**RMN ( Registered Mental Health Nurse)** Mental health nurses assist in promoting and supporting a person's recovery and enabling them to have more involvement and control over their condition. They typically support people with mental health issues ranging from anxiety and depression to personality and eating disorders or addiction to drugs or alcohol

**CNP ( Certified Nurse Practitioner)** Nurse practitioners diagnose, prescribe and treat patients. Unlike registered nurses (RNs), they do not have to work under the direct supervision of a physician. And many more other nursing disciplines

# FUTURE POSITIONS AND MORE

We recruit for the following positions but not limited to:



## PHYSICIAN ASSISTANT

We provide qualified and licensed Physician Assistants (PA). They diagnose patients, give treatments, prescribe medicine, and more. They work under the supervision of a licensed physician.



## OCCUPATIONAL THERAPIST

We provide Occupational Therapists staff (OTs) to help the disabled, ill, and injured people to perform everyday activities, such as getting dressed or getting around the kitchen. We place in hospitals, schools, nursing homes, and more.



## DOCTORS

We provide qualified and licensed doctor staffing solutions. They contribute to the management and leadership of health services and the delivery of healthcare across all medical platforms.



## CLINICAL ADMINISTRATOR

We provide staff with recognised medical qualifications. The job is to provide professional leadership to medical staff, ensuring that all medical standards are complied with. As well as a medical qualification, they are registered with vast experience in clinical health organisation management and health services management.



## OPTOMETRISTS

Provision of fully qualified Optometrists who identify vision problems by performing examinations and prescribe treatments to deal with these issues. When necessary, optometrists may refer clients to specialists.



## PHYSIOTHERAPISTS

Lifeline provides Paramedics who provide urgent medical attention in emergency situations, transporting patients to the hospital. Employer may decide on the qualification and experience needed. Equipped with a driver's licence and ambulance..



# HOW TO APPLY?

## WHY YOU SHOULD APPLY

Lifeline Agency are recruiting experienced nurses, carers and doctors for permanent positions in leading UK hospitals. These vacancies are across a number of Directorates including - Theatre, NICU, Paeds, ED, Med/Surgical and ICU. Block placements or Temp positions, minimum of 37.5 hour working week.

- Two months free accommodation for internationally trained nurses, carers or doctors relocating from outside of Europe\*
- Career progression/professional development opportunities.
- Full support from Lifeline throughout the entire process.
- Assistance with NMC registration and support provided with relocation to the UK (if required Ts and Cs apply).
- Meet & greet at the airport\*
- Paid annual leave
- Terms & Conditions Apply

### **To apply for these roles (International Candidates) :**

You must prove you can read, write, speak and understand English to at least level B1 on the Common European Framework of Reference for Languages (CEFR) scale.

Prove your knowledge of English by passing a Secure English Language Test (SELT) from an approved provider.

Be a qualified doctor, nurse, health professional or adult social care professional or trained healthcare worker.

Work in an eligible health or social care job.

Work for a UK employer that's been approved by the Home Office

Have a 'certificate of sponsorship' from your employer with information about the role you've been offered in the UK

Be paid a minimum salary - how much depends on the type of work you do

To apply for the above jobs in the United Kingdom, please email your updated CV to [info@lifelinehcare.com](mailto:info@lifelinehcare.com). You can also send us a whatsapp. To check if you qualify for a visa and other requirements please visit the UK government website: <https://www.gov.uk/health-care-worker-visa>



**SOUTH AFRICA**

51-61 Rosettenville Road ,Village Main Ind Park , Johannesburg 2001, SA  
**Tel +27 11 334 0112 Cell +27 71 724 1444**

**UNITED KINGDOM**

South England • South West England • South East England •  
East England • North England • West England

**56 Laburnum Grove Slough SL38QU, United Kingdom**

**National : +44 (0) 3301 745025 • Slough : +44 (0) 1753 971 243**

**ZIMBABWE**

14484 Inkubu Road, Selborne Park, Bulawayo, Zimbabwe

**Tel +263 29 2281352 Cell +263 77 821 4862**

[www.lifelinehcare.com](http://www.lifelinehcare.com) • [info@lifelinehcare.com](mailto:info@lifelinehcare.com)

SCAN QR CODE



[www.lifelinehcare.com](http://www.lifelinehcare.com)